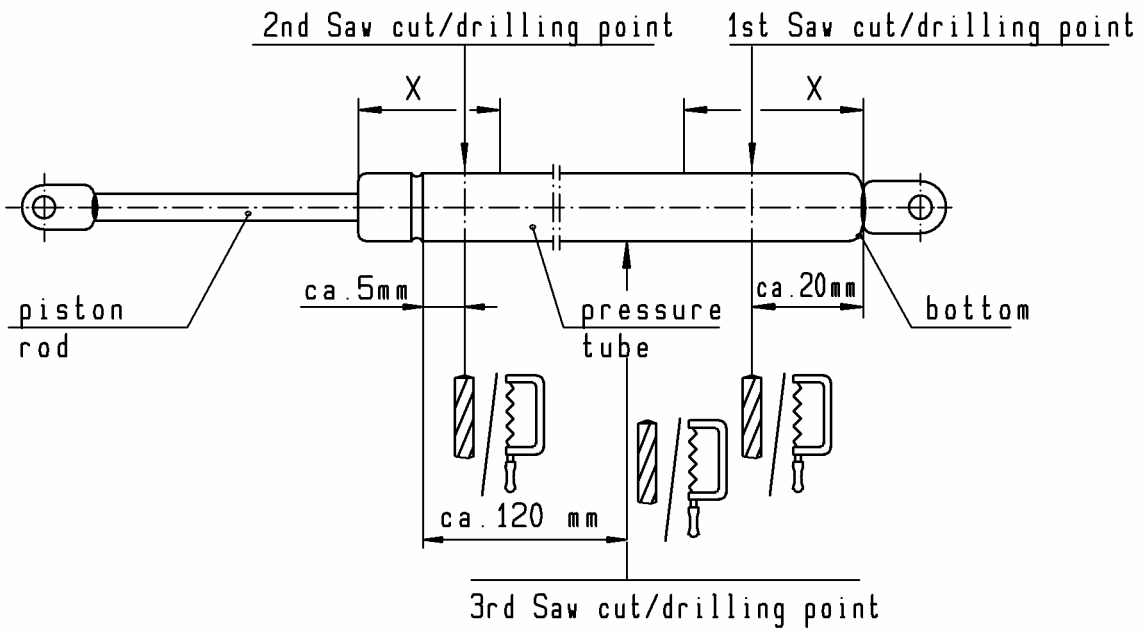


Disassembly and pressure discharge of STABILUS products prior to disposal

The print-out is not subject to the modification service.

2.11 Model : DORSTOP

Before opening the device by sawing/boring it must be positioned to its extended length



1. Saw cut/drilling point: Saw/bore the pressure tube open about 20 mm from the bottom.
2. Saw cut/drilling point: Saw/bore the device out of the pressure tube at 5 mm from the bead.
3. Saw cut/drilling point: Saw/bore the device out of the pressure tube at 120 mm from the bead.

Intended for internal and external use

EN

DE: X | EN: X | ES: X | IT: X | PR: X | FR: X
Preceding edition: 11.11.1993

Rev.: 10