

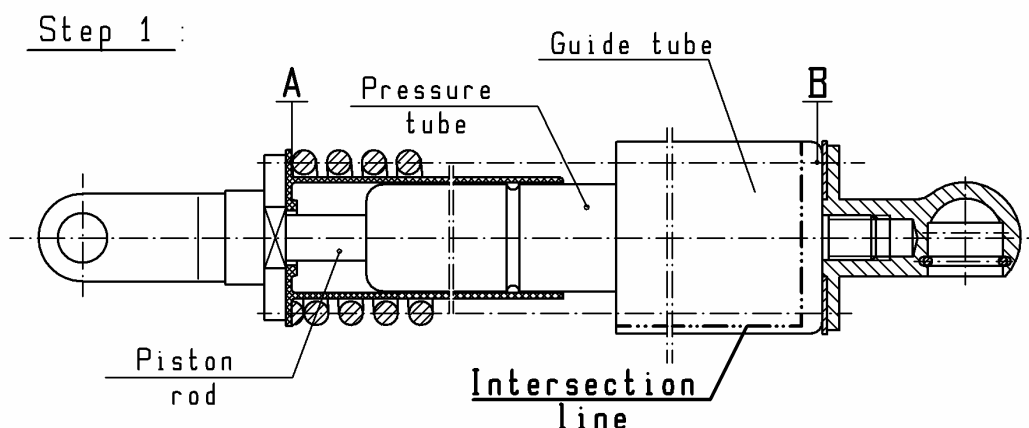
The print-out is not subject to the modification service.

## Disassembly and pressure discharge of STABILUS products prior to disposal

Document No.  
STAB-Spec. 10009375  
Page 4  
Ident. Doc.:SN 03.10-00/13

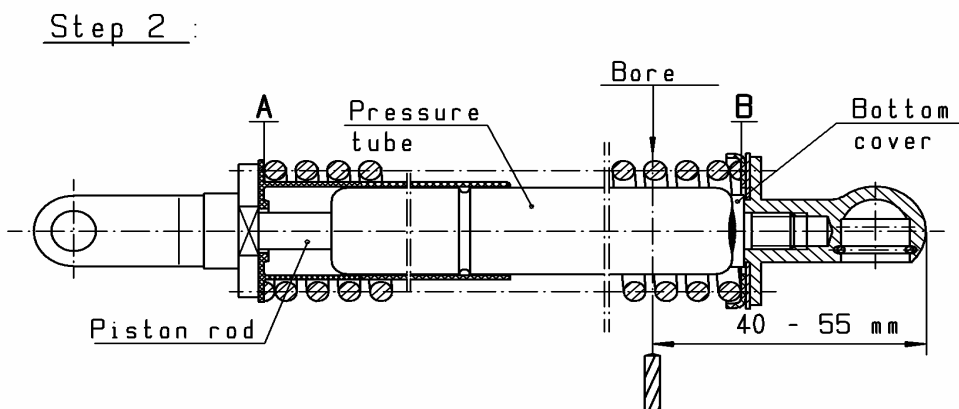
2.2 Model : LIFT-O-MAT telescopic leg : Step 1

**The following 3 steps must be carried out in the indicated sequence.**



Cut open the guide tube lengthwise using a suitable knife and remove by opening up.

**CAUTION! - The coil pressure spring is pre-loaded between positioning points A and B**



Bore: Open by boring the pressure tube between the windings of the coil pressure spring at a range of 40 - 55 mm.

**CAUTION! - The coil pressure spring is pre-loaded between positioning points A and B.**

Intended for internal and external use

EN

DE: X | EN: X | ES: X | IT: X | PR: X | FR: X  
Preceding edition: 11.11.1993

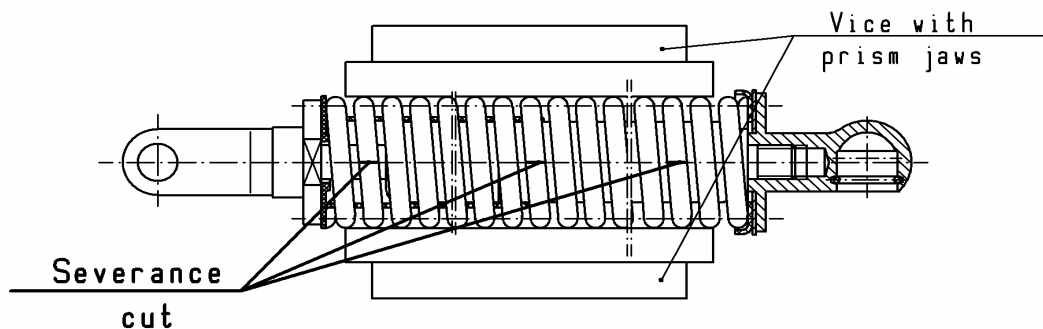
Rev.: 10

**Disassembly and pressure discharge of STABILUS products prior to disposal**

The print-out is not subject to the modification service.

**Step 3 :**

- Clamp the complete device above the coil pressure spring in a vice with prism jaws.



Intended for internal and external use

- In at least 3 locations of the coil pressure spring sever the windings using a right angle grinder with cutting-off wheel. Make sure the severance cuts are parallel to gas spring axle. If possible after each severance cut turn the spring windings (clockwise) into one another.
- Turn the spring sections into one another until the pre-load is eliminated.

**CAUTION! - When sectioning the spring windings beware of sudden impact strain on the cutting-off wheel. Severance work must only be performed by specialist staff. Observe the safety instructions!**

EN

DE: X | EN: X | ES: X | IT: X | PR: X | FR: X  
 Preceding edition: 11.11.1993

Rev.: 10