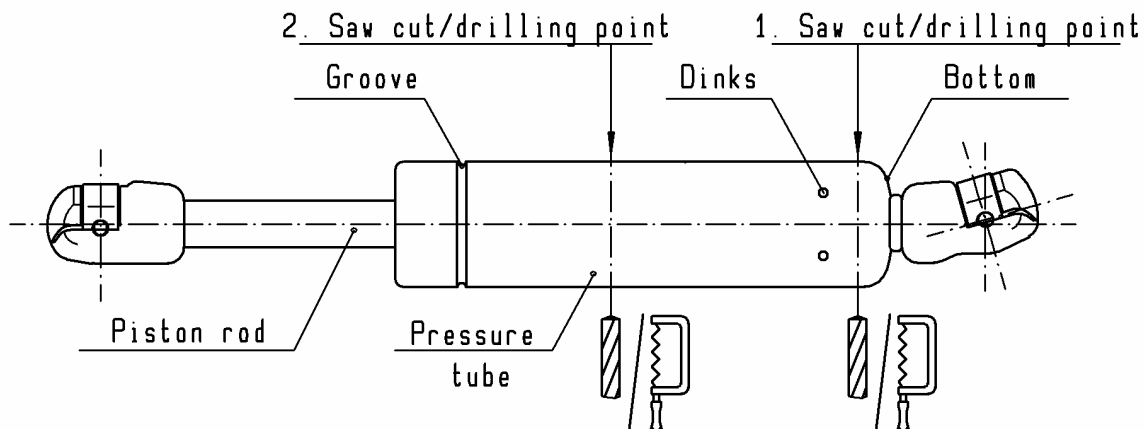


The print-out is not subject to the modification service.

## Disassembly and pressure discharge of STABILUS products prior to disposal

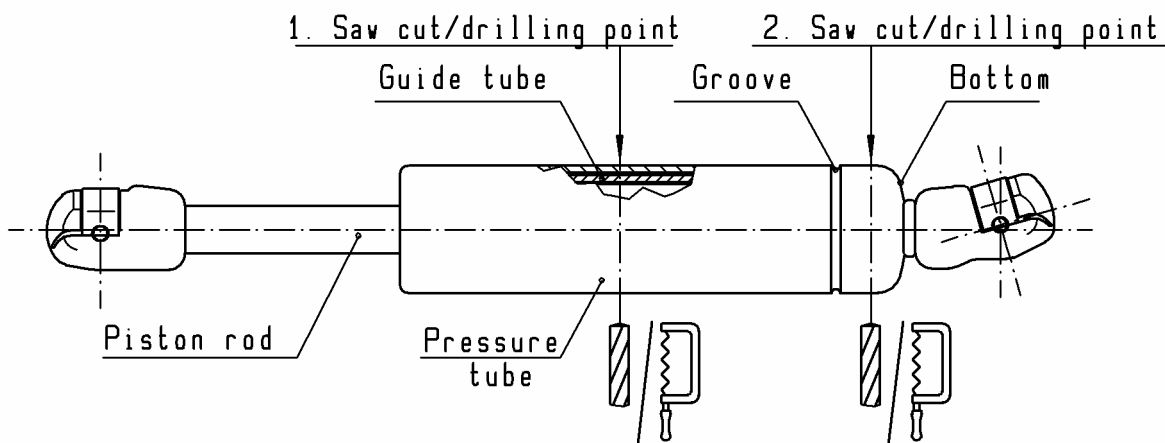
Document No.  
STAB-Spec. 10009375  
Page 6  
Ident. Doc.:SN 03.10-00/13

2.3 Model : I LIFT-O-MAT with interior valve  
II TWINTUBE LIFT-O-MAT with interior valve  
I LIFT-O-MAT with interior valve



First saw cut/drilling point : Saw or drill between dinks and pressure tube bottom  
Second saw cut/drilling point: Saw or drill between groove and dinks

II TWINTUBE LIFT-O-MAT with interior valve



First saw cut/drilling point : Saw or drill open the outer pressure tube and the guide tube in the area before the groove starting from the piston rod.

Second saw cut/drilling point : Saw or drill open in the area between groove and pressure tube bottom.

Intended for internal and external use

EN

DE: X | EN: X | ES: X | IT: X | PR: X | FR: X  
Preceding edition: 11.11.1993

Rev.: 10