

The print-out is not subject to the modification service.

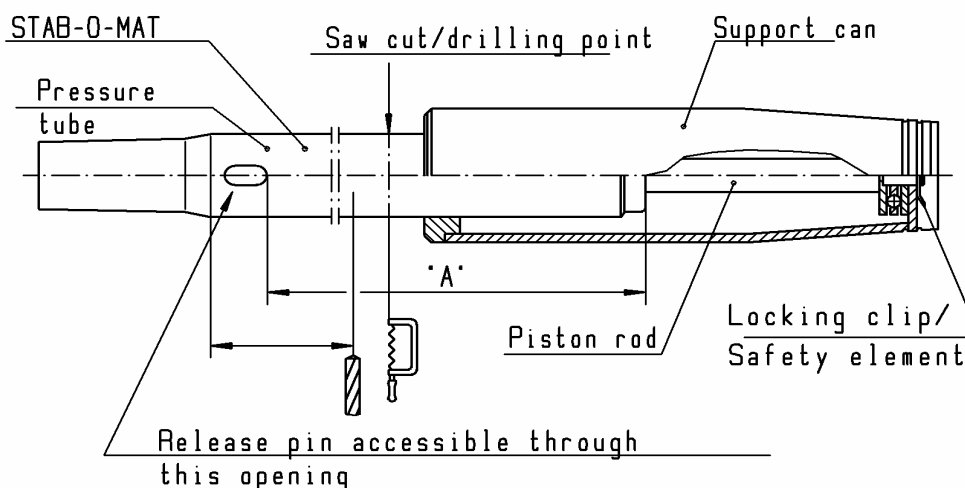
## Disassembly and pressure discharge of STABILUS products prior to disposal

Document No.  
STAB-Spec. 10009375  
Page 9  
Ident. Doc.:SN 03.10-00/13

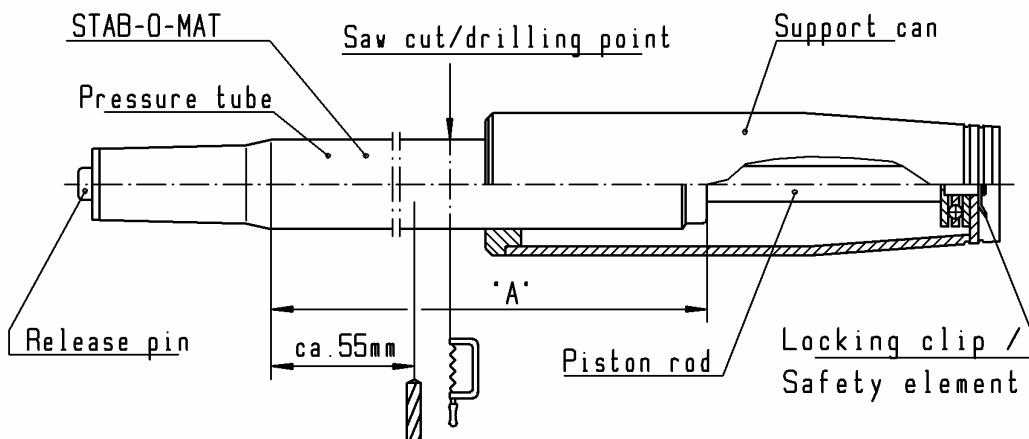
### 2.6 Model : STAB-O-MAT

**Attention! For double tube devices, the depth of cut must be at least 7 mm.**

#### a) Interior release pin



#### b) Outside release pin



- Disassemble STAB-O-MAT column type (remove locking clip /safety element and pull off support can).
- Version with internal release facility : actuate release pin with associated release lever.

Saw cut : Saw open pressure tube in centre of region "A".

or

Drilling point: Drill the pressure tube open about 55 mm from cone.

Rev.: 10

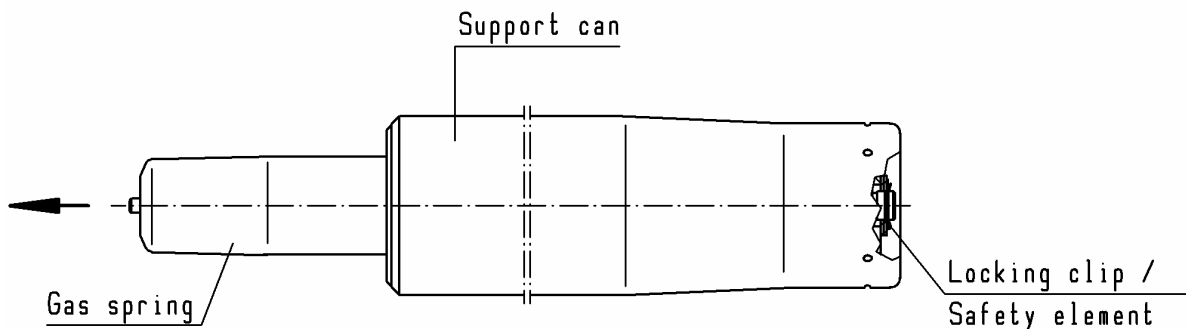
DE: X | EN: X | ES: X | IT: X | PR: X | FR: X  
Preceding edition: 11.11.1993

The print-out is not subject to the modification service.

## Disassembly and pressure discharge of STABILUS products prior to disposal

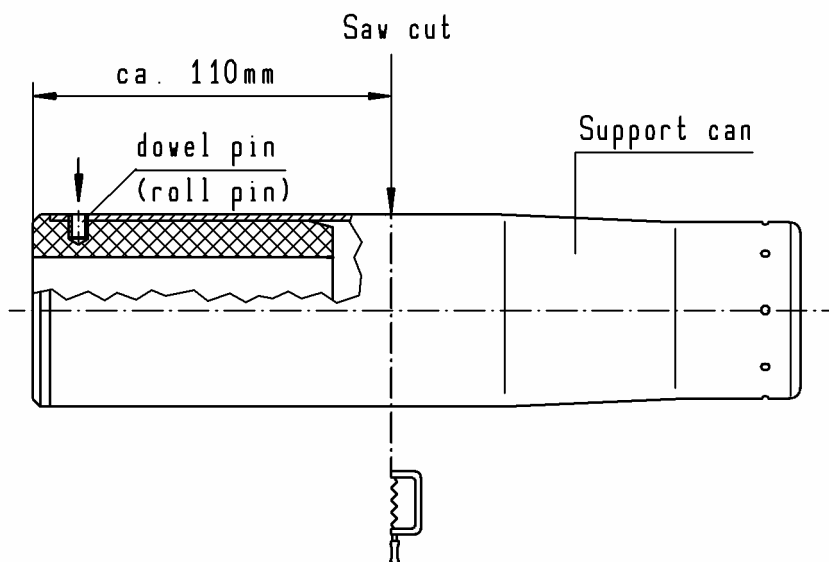
Document No.  
STAB-Spec. 10009375  
Page 10  
Ident. Doc.:SN 03.10-00/13

c) Separate guide bushing from support can



- Disassemble STAB-O-MAT column type (remove locking clip /safety element and pull off support can).

Disassemble bolted guide bushing



Cut/ saw outer tube 110 mm from the top edge. Chuck the cut tube piece including guide bushing, with locating pin pointing up.  
Using a drift pin, knock the locating pin inwards through the guide sleeve.  
Repeat step for devices with two locating pins.  
Use a punch to knock the guide bushing out of the outer tube.

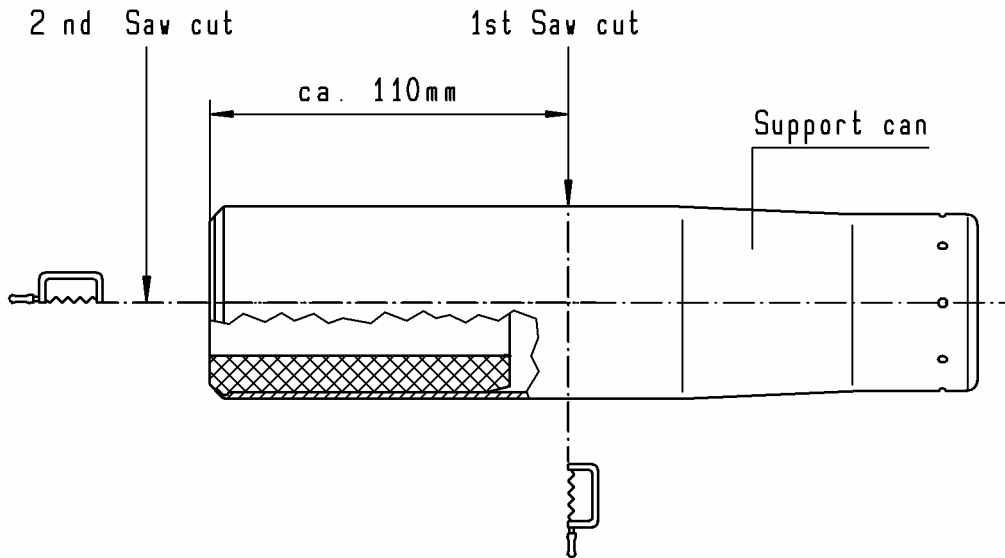
Rev.: 10

DE: X | EN: X | ES: X | IT: X | PR: X | FR: X  
Preceding edition: 11.11.1993

**Disassembly and pressure discharge of STABILUS products prior to disposal**

The print-out is not subject to the modification service.

Disassemble beaded guide bushing:



- First sawing cut: Cut outer tube approx. 110 mm from the top edge.
- Second sawing cut: Cut outer tube and guide bushing longitudinally.
- Knock guide bushing out of outer tube.

Intended for internal and external use

EN

DE: X | EN: X | ES: X | IT: X | PR: X | FR: X  
 Preceding edition: 11.11.1993

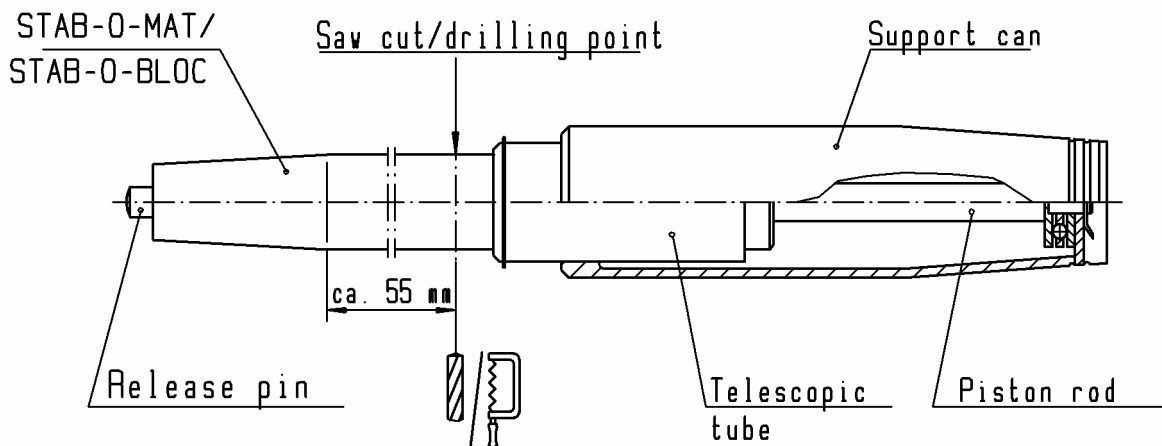
Rev.: 10

The print-out is not subject to the modification service.

## Disassembly and pressure discharge of STABILUS products prior to disposal

Document No.  
STAB-Spec. 10009375  
Page 12  
Ident. Doc.:SN 03.10-00/13

### 2.7 Model : STAB-O-MAT / STAB-O-BLOC telescopic column



- Press the release pin and extended the column.
- Version with internal release facility : actuate release pin with associated release lever.

Saw cut/  
Drilling point : Saw or drill the pressure tube open about 55 mm from cone.

Intended for internal and external use

EN

DE: X | EN: X | ES: X | IT: X | PR: X | FR: X  
Preceding edition: 11.11.1993

Rev.: 10

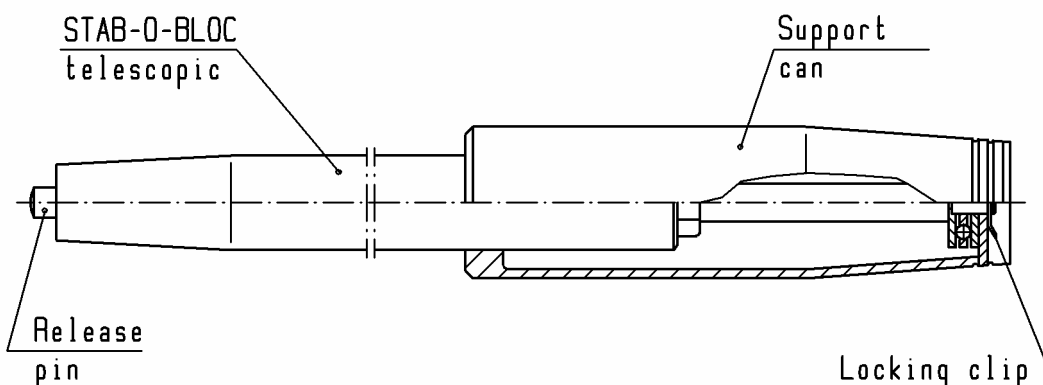
The print-out is not subject to the modification service.

## Disassembly and pressure discharge of STABILUS products prior to disposal

Document No.  
STAB-Spec. 10009375  
Page 13  
Ident. Doc.:SN 03.10-00/13

- 2.8 Model : I STAB-O-BLOC column  
II STAB-O-BLOC telescopic  
III STAB-O-BLOC

### I STAB-O-BLOC column

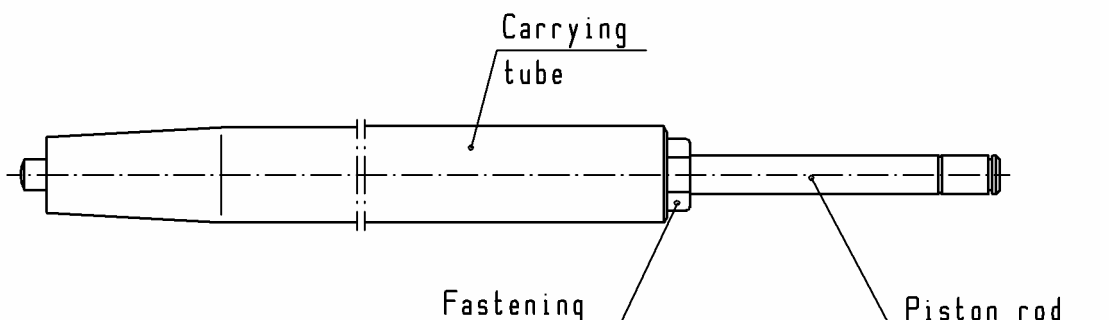


- Remove locking clip
- Withdraw STAB-O-BLOC telescopic from the support can.

### II STAB-O-BLOC telescopic

#### a) removable connection

- carrying tube with STAB-O-BLOC by fastening screw



- unscrew fastening screw
- take out STAB-O-BLOC
- venting see point III

Intended for internal and external use

**EN**

DE: X | EN: X | ES: X | IT: X | PR: X | FR: X  
Preceding edition: 11.11.1993

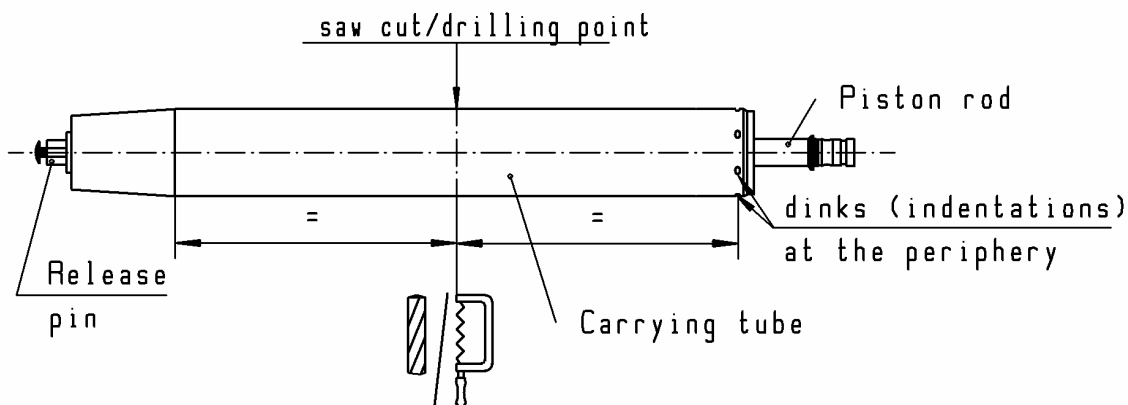
**Rev.: 10**

The print-out is not subject to the modification service.

## Disassembly and pressure discharge of STABILUS products prior to disposal

Document No.  
STAB-Spec. 10009375  
Page 14  
Ident. Doc.:SN 03.10-00/13

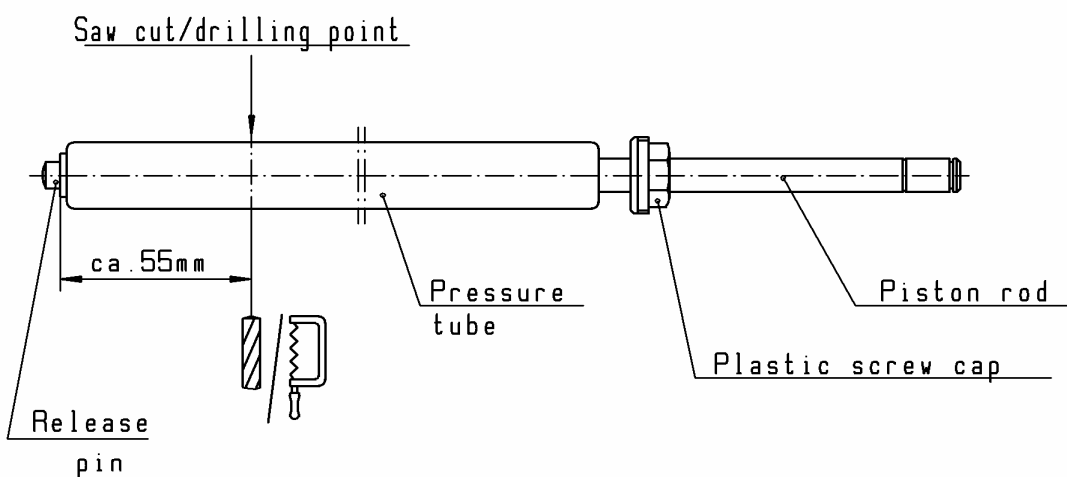
b) non removable connection  
- carrying tube with STAB-O-BLOC by dinks on carrying tube



Press the release pin and extended the piston rod.  
Saw cut/drilling point: Saw or drill the unit open between start of cone (carrying tube, release pin side) and carrying tube dinks (piston rod side)

**Caution: triple tube unit - min. cutting depth 8mm**

### III STAB-O-BLOC



Depress release pin and extend piston rod.

Saw cut/drilling point: Saw or drill the unit open about 55 mm from the bottom.

**CAUTION: Double tube unit - min. cutting depth 5 mm.**

Rev.: 10

DE: X | EN: X | ES: X | IT: X | PR: X | FR: X  
Preceding edition: 11.11.1993

EN

Intended for internal and external use